

ExtendWeather Seasonal Forecast for the Viticulture Sector



ExtendWeather generates accurate seasonal forecasts on the climate situation globally and locally to help viticulturists to access timely and updated seasonal weather information; an extreme climate forecast helps viticulturists to maximize returns, reduce risks and produce the best vintage.

Featured Seasonal Forecast Products

ExtendWeather is dedicated to the delivery of practical forecast indicators to the viticulture sector beyond industry standard precipitation and temperature anomalies:

- Temperature anomaly
- Precipitation anomaly
- Potential evapotranspiration deficit
- Wind run
- Watts of solar radiation

Indicators for Viticulture Management

Wine industry is facing many risks, regarding mostly quality and yield. Both characteristics remain largely defined by weather conditions. To estimate crop quality sugar, polyphenols content and acidity are assessed and these are determined by photosynthesis which is driven by temperature, sunshine and pluviometry. Temperature is a key limiting factor in photosynthesis. Both temperatures too high and too low can impact grape quality. Sunshine is often linked with temperature and precipitation. If above average rainfall is forecast then cloudiness will also increase and temperatures typically are depressed. With seasonal and sub-seasonal forecasting the understanding of temperatures to be expected in each phase of crop development are available. Similarly a burgeoning mid-season grape vintage can change with onset of poor late season weather conditions be they be too hot or too wet.



Again, seasonal and sub-seasonal forecasts can provide this sort of information for the vintner. Such information can also be used to time specific winery activities such as pruning and spraying and a range of other management activities. The rolling ten day forecast provides the updates required as the seasonal evolves to keep on top of the decisions that need to be made as the weather changes.

Modelling and Data Provision

ExtendWeather scientists can provide modelling and tool development services to answer clients' particular operational and planning questions.

We can also deliver data packages that are customized to seamlessly integrate with clients' models for speedy ingestion of new information for timely analysis.

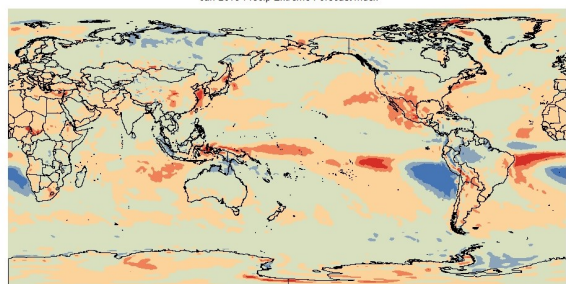


ExtendWeather Seasonal Forecast

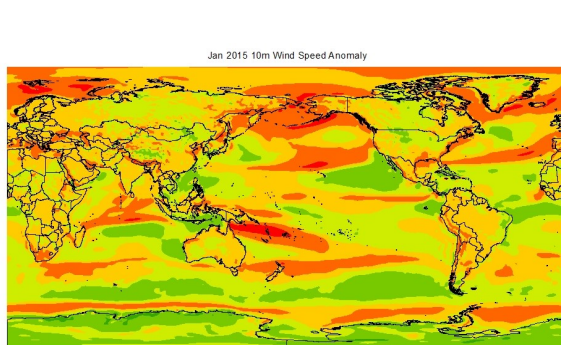
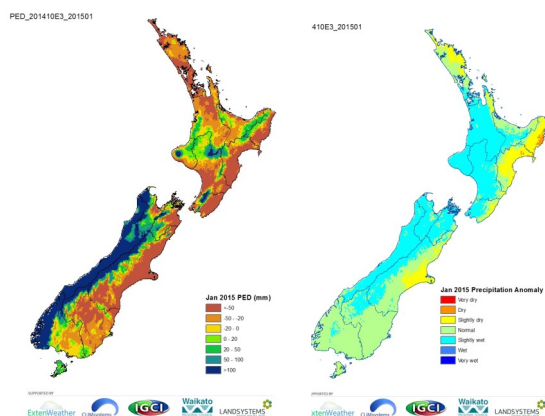
Innovative sciences, customized solutions



Jan 2015 Precip Extreme Forecast Index



PEFI_EFI_201410E3_201501



Wnd10_Anomaly_201410E3_201501

Seasonal Forecasts – Our monthly forecasts and 10 day (or biweekly) advisories keep you abreast of the latest model guidance and potential changes to the forecast.

Intelligence – The Seasonal Forecast leverages the valuable (and not widely distributed) data from the second version of the NCEP (National Centre for Climate Predictions) Climate Forecast System (CFSv2). It provides a probabilistic forecast of up to nine months with customized practical indicators for the viticulture sector. This forecast also discusses teleconnection indexes and other global circulation phenomenon such as El Niño/La Niña.

Practical and Comprehensive – ExtendWeather provides detailed one to nine month customized forecast indicators beside traditional temperature and precipitation forecasts. Including wind and solar radiation and derived products such as drought and wet period onsets, extreme forecast index (EFI), and potential evapotranspiration index (PED).

Proprietary Models – ExtendWeather develops a different approaches and models, considers ENSO, sea level pressure anomalies and temperature trend and

About ExtendWeather

ExtendWeather is a brand of CLIMsystems Ltd. With the support from local council, industries, and international institutes and experts, ExtendWeather is able to provide a public website for general seasonal climate forecast products and a subscription service for digital provision of forecast data along with customized services and solutions to energy industry clients.



9 Achilles Rise
Hamilton, 3210
New Zealand

<http://www.climsystems.com/>
E-mail: info@climsystems.com
Twitter: @climsystems

Phone: (647) 834 2999
Skype: climateproof