

# ExtendWeather Seasonal Forecast for the Forestry Sector



ExtendWeather generates accurate seasonal forecasts on the climate situation globally and locally to help the forestry industry to understand the seasonal changes in weather that can impact on planting and harvesting schedules and labour scheduling along with maintenance planning, thus hedging downside risks.

## Featured Seasonal Forecast Products

ExtendWeather is dedicated to the delivery of practical forecast indicators to the forestry sector beyond industry standard precipitation and temperature anomalies:

- Heating/cooling degree day (HDD/CDD)
- Standardised Precipitation Index
- River flow
- Wind run
- Watts of solar radiation

## Indicators for Forestry Management

Seasonal and sub-seasonal information on rainfall and cold spells can help the forestry industry to plan their work particularly during the planting period. Drought, floods and strong winds also have negative effects in the forest. Moreover, summer temperatures and rainfall affect nursery (clonal propagation) yields. Freezing and thawing conditions not only help forestry workers to understand the growing seasons but also the conditions for driving through the forests and potential harvest conditions thus improving on safety. Extreme Forecast Index (EFI) forecasts probabilities of unusual and extreme events in temperature and precipitation; while the drought/wet index forecasts the onset of drier than usual and wetter than usual conditions.



With invasive plants and allergic plants, seasonal forecasts can help predict the change in the pollen production of these plants. To predict disease rates by using spring temperatures for example to predict the risk of a disease in the fall, or seasonal data that will help us come up with an overall risk for the coming season. Use seasonal and sub-seasonal forecast to manage warning systems.

## Modelling and Data Provision

ExtendWeather scientists can provide modelling and tool development services to answer clients' particular operational and planning questions.

We can also deliver data packages that are customized to seamlessly integrate with clients' models for speedy ingestion of new information for timely analysis.



# ExtendWeather Seasonal Forecast

Innovative sciences, customized solutions



**Seasonal Forecasts** – Our monthly forecasts and 10 day (or biweekly) advisories keep you abreast of the latest model guidance and potential changes to the forecast.

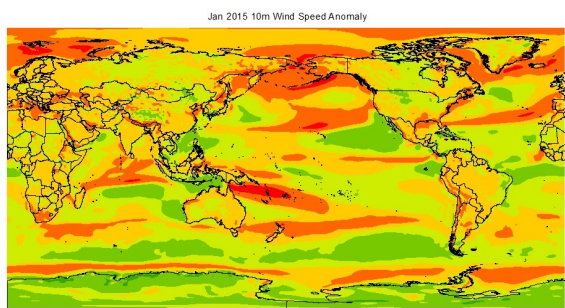
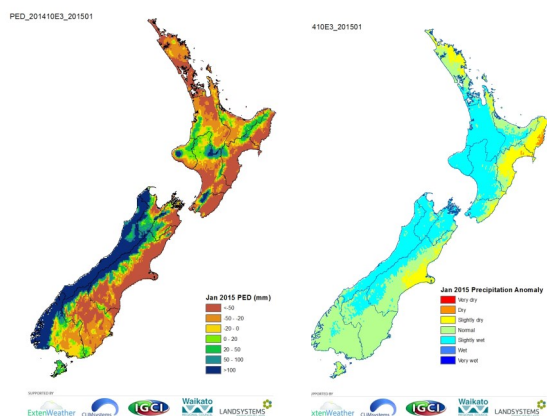
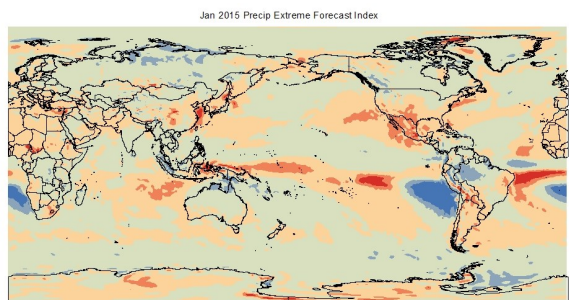
**Intelligence** –The Seasonal Forecast leverages the valuable (and not widely distributed) data from the second version of the NCEP (National Centre for Climate Predictions) Climate Forecast System (CFSv2). It provides a probabilistic forecast of up to nine months with customized practical indicators for the agricultural sector. This forecast also discusses teleconnection indexes and other global circulation phenomenon such as El Niño/La Niña.

**Practical and Comprehensive** – ExtendWeather provides detailed one to nine month customized forecast indicators beside traditional temperature and precipitation forecasts. Including wind and solar radiation and derived products such as drought and wet period onsets, extreme forecast index (EFI), and potential evapotranspiration index (PED).

**Proprietary Models** – ExtendWeather develops a different approaches and models, considers ENSO, sea level pressure anomalies and temperature trend and applies a scientifically robust downscaling technique.

## About ExtendWeather

ExtendWeather is a brand of CLIMsystems Ltd. With the support from local council, industries, and international institutes and experts, ExtendWeather is able to provide a public website for general seasonal climate forecast products and a subscription service for digital provision of forecast data along with customized services and solutions to forestry industry clients.



9 Achilles Rise  
Hamilton, 3210  
New Zealand

<http://www.climsystems.com/>  
E-mail: [info@climsystems.com](mailto:info@climsystems.com)  
Twitter: @climsystems

Phone: (647) 834 2999  
Skype: climateproof